

TEXAS RANGERS AND TRANSPORTATION

Grade Level Focus: Fourth

Topic: Transportation Developments and the Texas Rangers

Compelling Question: How did transportation improvements help Texas Rangers do their job?

TEKS:

- Social Studies: 4.3(D), 4.4(C), 4.11(D), 4.18(B)
- Math: 4.1(A), 4.4(H)

Materials: document with transportation images; math worksheet

Background Information:

The Texas Rangers were first founded in 1823 (almost 200 years ago!) and transportation has changed a lot since then. At first, all Texas Rangers travelled on horseback. After 1850, more and more train tracks covered the state of Texas and the Rangers started traveling by train. By the 1920s, cars were widely available and common for the Rangers to use. Because roads were often bad during this time period, Texas Rangers would typically have a horse trailer being pulled behind their vehicle so they could switch modes of transportation when necessary. At the very least, all the way up into the 1930s, Rangers would often carry a saddle with them so they would be prepared. Modern vehicles are even faster and more reliable than earlier cars, and modern roads and highways are more widespread and dependable than the dusty, windy roads of the 1920s. Today, the Texas Rangers have access to the Texas Department of Public Safety's Aircraft Operations Division and can be anywhere in the state of Texas within an hour.

Engage	<p>What kind of transportation do you like to take today?</p> <ul style="list-style-type: none"> • Encourage discussion about the different modes of transportation they use for different things, i.e. bikes to go to the park, cars to go to school, planes to go on a trip, boats to cross water etc.
Explore	<p>Talk about how transportation options have developed and improved over time</p> <ul style="list-style-type: none"> • What was the very first type of transportation? • What do you think is the best/fastest transportation now?
Explain	<p>Talk about how developments in transportation would help the Texas Rangers</p> <ul style="list-style-type: none"> • Texas Rangers can get where they need to go faster! What other benefits can you think of? • Fun fact: Modern Texas Rangers still use horses. Sometimes the terrain is too rough for cars and horses don't run out of gas!
Elaborate/ Evaluate	<p>See how faster transportation really helps the Rangers</p> <ul style="list-style-type: none"> • Give the students the math worksheet <ul style="list-style-type: none"> ○ If you would like to stretch it out a bit more, ask the students in which cases do they think the robbers would have gotten away with the money.

EXAMPLES OF TEXAS RANGER TRANSPORTATION THROUGH THE YEARS

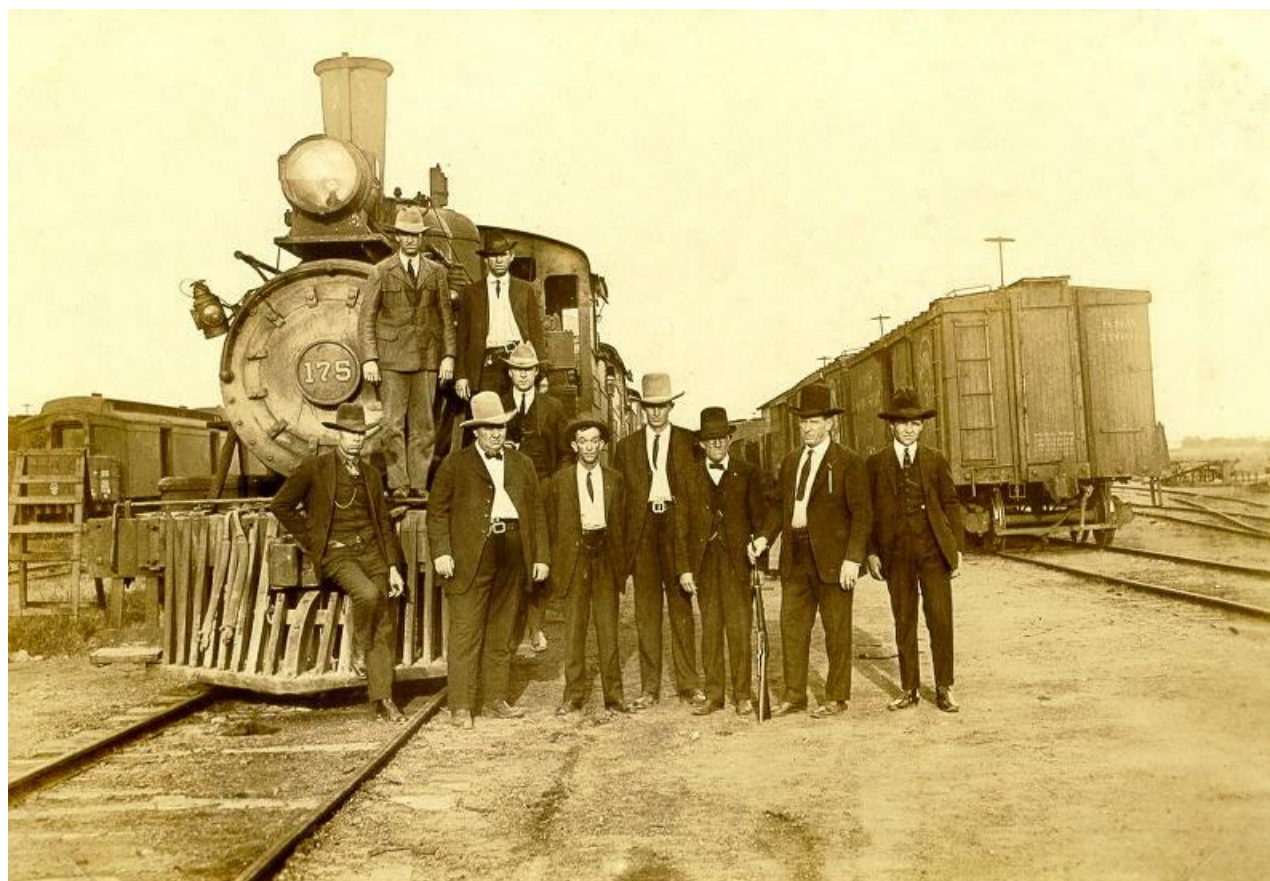
THE HORSE- TOP SPEED: 9 MPH



An 1879 photograph of Texas Ranger James B. Gillett on his horse Dusty. Photograph courtesy of the Texas Ranger Hall of Fame and Museum.

EXAMPLES OF TEXAS RANGER TRANSPORTATION THROUGH THE YEARS

THE TRAIN- TOP SPEED: 20 MPH



This photograph of Texas Rangers by a train engine was taken at the Katy Railroad yard circa 1922. The photograph was taken by Brubakers Studio. Photograph courtesy of the Texas Ranger Hall of Fame and Museum.

EXAMPLES OF TEXAS RANGER TRANSPORTATION THROUGH THE YEARS

THE EARLY CAR- TOP SPEED: 30 MPH



This photograph was taken in 1924 in Marathon, Texas. Texas Ranger Lee Trimble is seen riding shotgun with Texas Ranger Arch Miller at the wheel. Photograph courtesy of the Texas Ranger Hall of Fame and Museum.

EXAMPLES OF TEXAS RANGER TRANSPORTATION THROUGH THE YEARS

THE MODERN CAR- TOP SPEED: 80 MPH



Texas Ranger Patrick Peña with vehicle and gear. Photographed in 2017 by Christine Rothenbush.

EXAMPLES OF TEXAS RANGER TRANSPORTATION THROUGH THE YEARS

THE MODERN HELICOPTER- TOP SPEED: 160 MPH



Texas Rangers practicing helicopter drills in 2013. Photograph courtesy of the Texas Department of Public Safety.

HELP! WE NEED THE TEXAS RANGERS!

BURGLARS ARE ROBBING A BANK 60 MILES AWAY!

Using the different speeds of the Texas Rangers' transportation options over the centuries, calculate how long it will take the Ranger to get to the scene of the crime.

1. In the 1820s, Rangers only had horses. If the bank is 60 miles away and the Ranger's horse can go 9 miles per hour, how many hours will it take for the Ranger to get to the scene of the crime?
2. In the 1880s, a lot of Texas Rangers used trains to get around the state. Trains during the time could go 20 miles per hour. How long will it take for the Rangers to get to the scene of the crime 60 miles away?
3. By the 1930s, the Texas Rangers finally had cars! But these cars went a lot slower than modern cars. If the Ranger's car can go 30 miles per hour, how long will it take for the Ranger to get to the scene of the crime 60 miles away?
4. By the 1990s, Texas Rangers had cars that could go a lot faster— easily up to 80 miles per hour! How long will it take for the Ranger to get to the scene of the crime 60 miles away?
5. In modern times, Texas Rangers have access to helicopters which can go as fast as 160 miles per hour! How long will it take for the Ranger to get to the scene of the crime 60 miles away?